



800-477-7883
buysuperstud.com

Super Stud Product Submittal

New Jersey Facility
2960 Woodbridge Avenue
Edison, NJ 08837-3406
P: 732-662-6200
technical@buysuperstud.com

Mississippi Facility
53 W. L. Runnels Industrial Drive
Hattiesburg, MS 39401-8320
P: 601-584-7550
sales@superstudsouth.com

Super Stud Bypass Deflection Strut SSDS1600

Specification Section: 05.40.00
(Cold-Formed Metal Framing)

Design Thickness: 0.1017 in (12g)
Min. Steel Thickness: 0.0966 in
Yield Strength, F_y 50 ksi
Tensile Strength, F_u 65 ksi
Coating: G90
Packaging: 10 pieces triple banded

Dimensions:

1.5" (horizontal) leg
5.5" vertical (slotted) leg
0.5 bottom stiffener
16" overall length

Product Description:

Super Stud bypass deflection strut provides up to 3" of vertical movement, while restraining stud framing against lateral movement. The SSDS 1600 is a full 16 inches long, and can be used with stud depths ranging from 3-5/8" up to 12" deep. Slots at both ends of the clip permit use with studs facing either left or right. The single Glide Plate™ included is taped in one set of slots, but can easily be moved to the other slots for studs turned in the opposite direction.

System Properties:

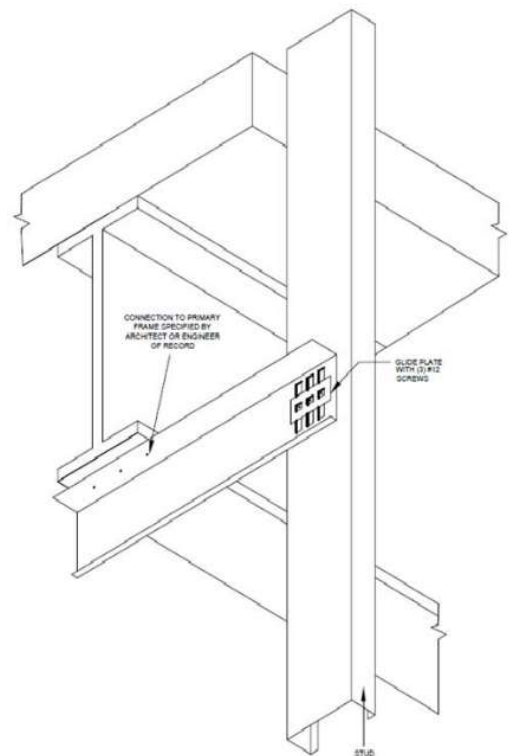
Super Stud Bypass Clips use the patented Glide Plate® system to allow for up to 3" of vertical movement in 3-1/2" tall vertical slots. The Glide Plate® for the SSDS 1600 allows the use of ANY #12 hex-head or pan-head screw: no special "shouldered" screws required. Three are required (3) #12 screws. #10 screws are permitted to be used, but load capacities must be reduced.

Codes and Standards

Super Stud products comply with the applicable provisions of the following:
International Building Code (IBC): 2006 – 2024
Sheet steel: ASTM A1003/A1003M; ASTM A653/A653M
Galvanized coating: ASTM A653/A653M
Members and tolerances: ASTM C955; AISI S240, AISI S201, AISI S202
Meets ASTM C1007 when installed properly in structure.

Sustainability

For LEED letters contact Technical Services at technical@buysuperstud.com or visit <https://www.buysuperstud.com/specs-resources/sustainability-and-green-building>



Member of

